



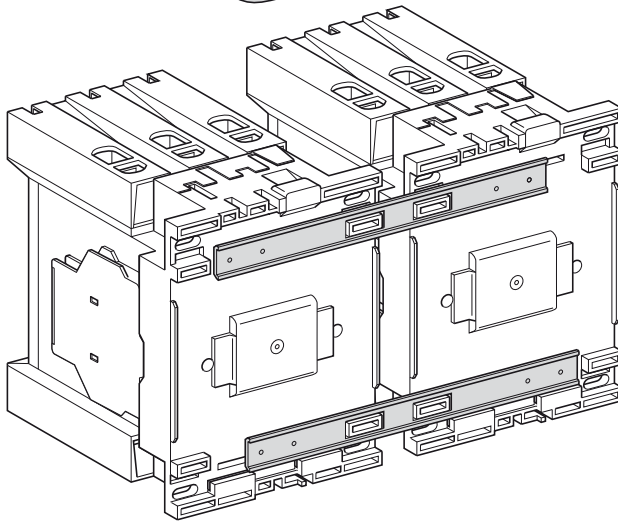
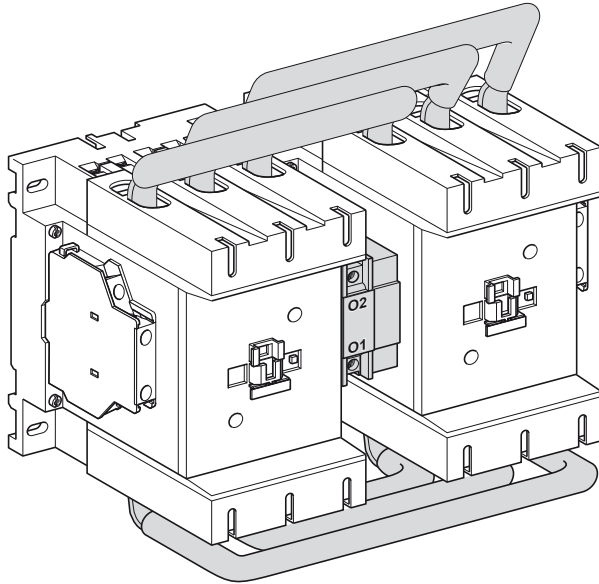
Telemecanique



SQUARE D

LA9-D11502

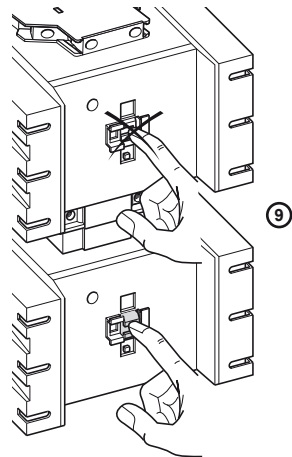
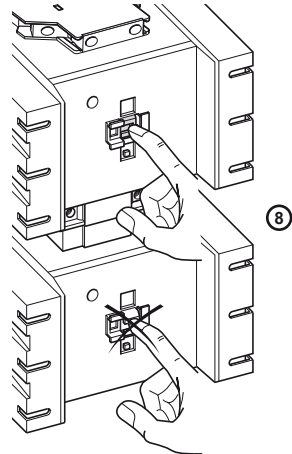
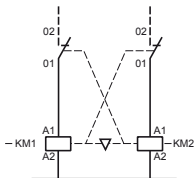
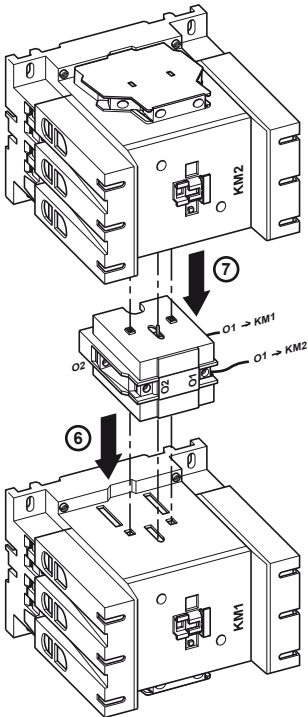
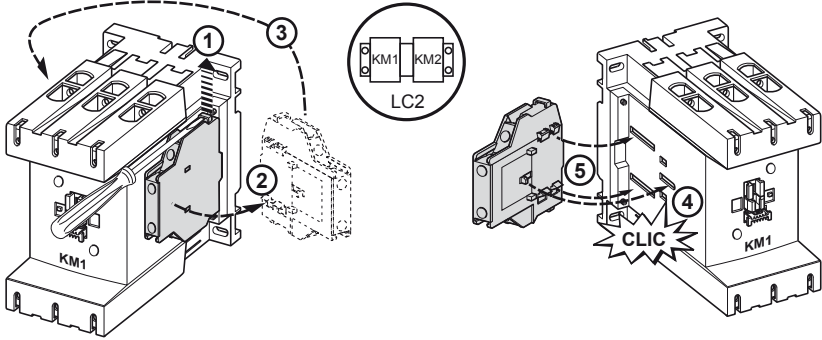
LA9-D11569 / D11570 / D11571



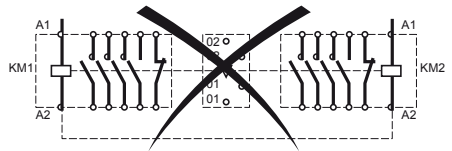
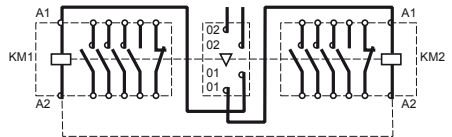
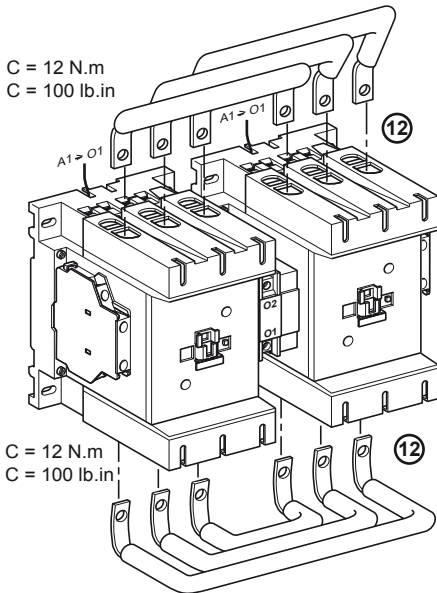
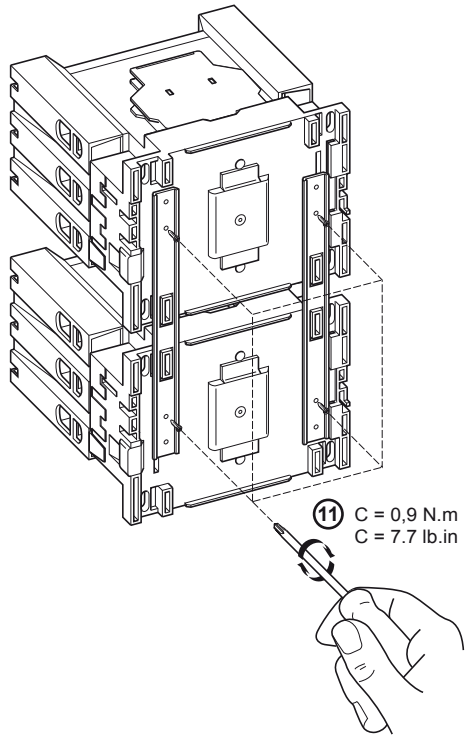
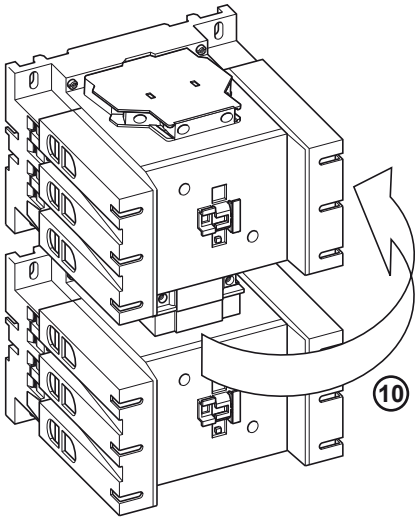
W9 1511302 0121 A03

**Schneider**  
 **Electric**

# LA9-D11502, LA9-D11569 / D11570 / D11571

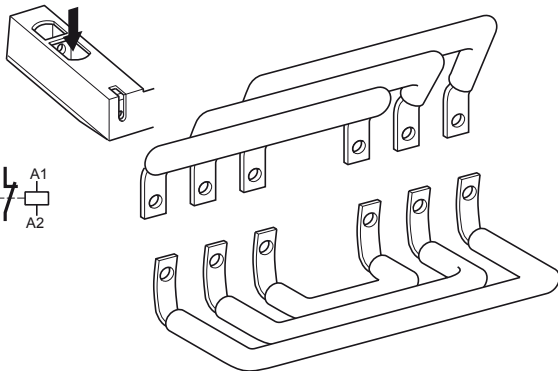
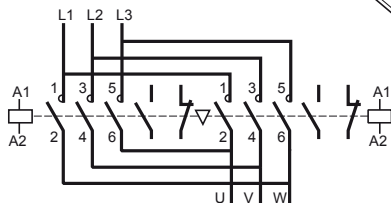


# LA9-D11502, LA9-D11569 / D11570 / D11571

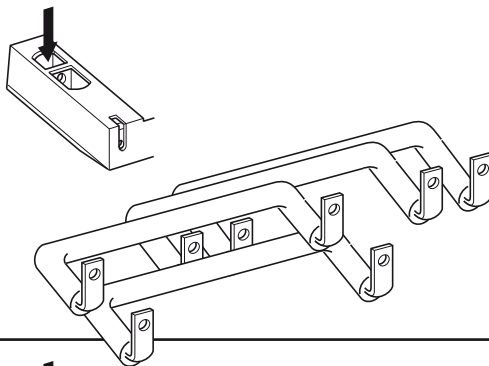
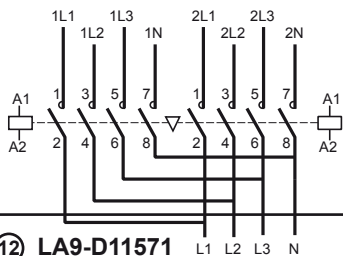


# LA9-D11502, LA9-D11569 / D11570 / D11571

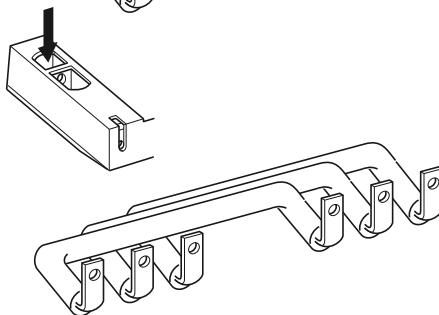
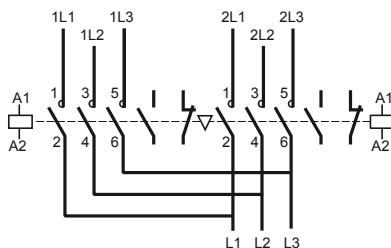
## 12 LA9-D11569



## 12 LA9-D11570



## 12 LA9-D11571



### ⚠ DANGER / PELIGRO / DANGER / ОПАСНО

#### HAZARDOUS VOLTAGE

Disconnect all power before servicing equipment. Electric shock will result in death or serious injury

#### TENSION PELIGROSA

Desenergice el equipo antes de realizarte servicio. Una descarga eléctrica podrá causar la muerte o lesiones serias.

#### TENSION DANGEREUSE

Coupez l'alimentation avant de travailler sur cet appareil. Une électrocution entrainera la mort ou des blessures graves.

#### ОПАСНОЕ НАПРЯЖЕНИЕ!

Перед обслуживанием или ремонтом убедитесь, что питание отключено. Поражение электрическим током может привести к смерти или тяжелым травмам